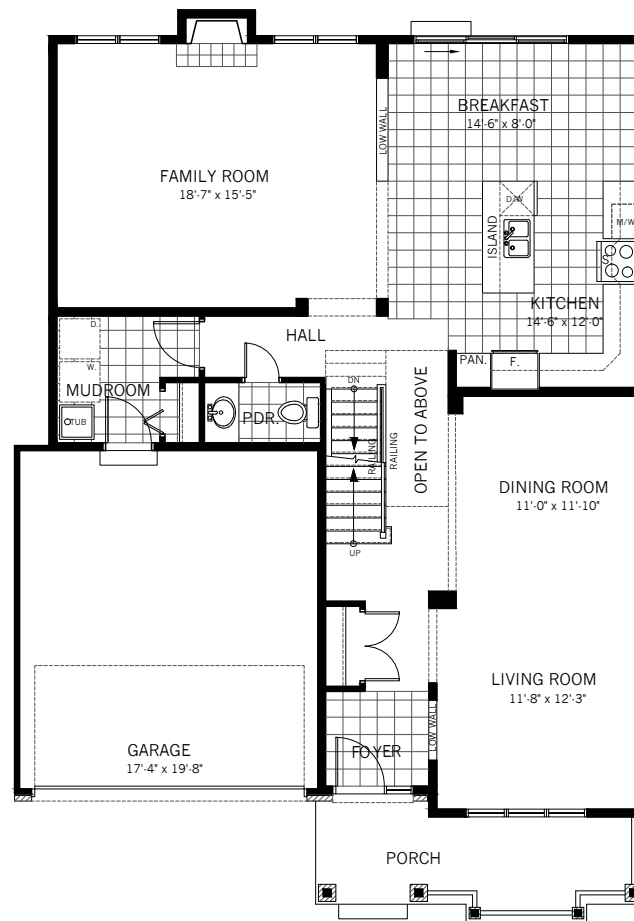
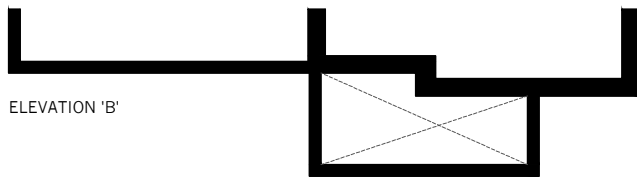
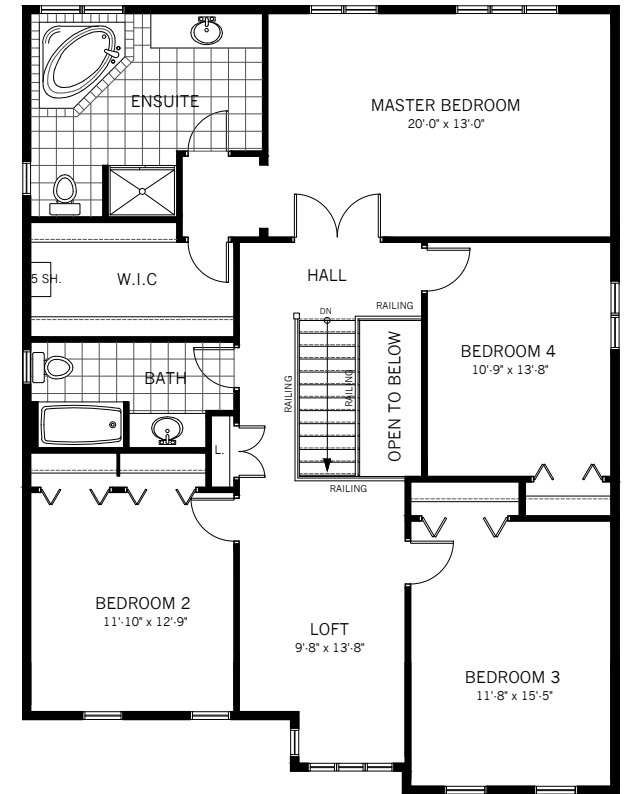
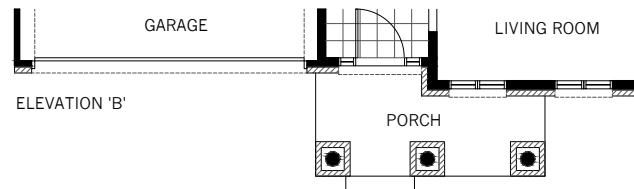


BASEMENT FLOOR PLAN

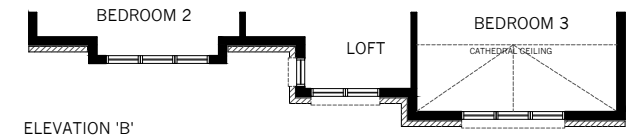
FINISHED ROOM: 35 Sq. Ft.
 OPTIONAL FINISHED RECREATION ROOM: 495 Sq. Ft.
 OPTIONAL FINISHED ROOM: 117 Sq. Ft.
 ELEVATION A



GROUND FLOOR PLAN - 1,237 Sq.Ft.
 ELEVATION A



SECOND FLOOR PLAN - 1,480 Sq.Ft.
 OPEN TO BELOW: 33 Sq. Ft.
 ELEVATION A



Actual usable floor space may vary from stated floor area. E. & O. E. Plans and specifications are subject to change without notice. March 2016.

Selkirk 2,752 sq ft

ASHCROFT
 BUILDING YOUR LIFESTYLE